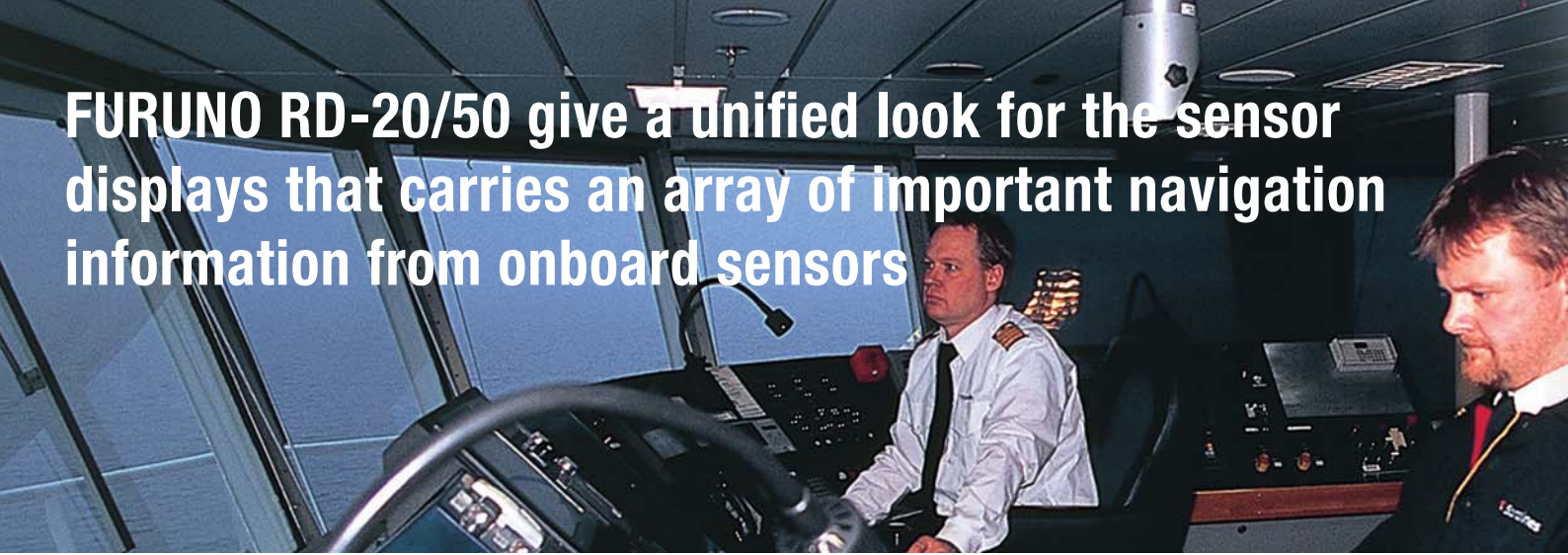


# REMOTE DISPLAY



Models:  
RD-20/RD-50

**FURUNO RD-20/50 give a unified look for the sensor displays that carries an array of important navigation information from onboard sensors**



## REMOTE DISPLAY

The RD-20/50 are the remote display units that display the data from onboard sensors. The displays are switched by the remote controller. The RD-50, 8.4-inch color LCD, has 3 display modes: digital, analog and graph. The RD-20 shows the data in alphanumeric on its red LED panel.

Up to 10 displays can be connected with a daisy chain cable. The display brilliance of all units connected can be centrally controlled from 1 dimmer controller.



**RD-50**

- ▶ High-contrast 8.4-inch color LCD
- ▶ Digital/graph/analog displays available
- ▶ Display orientation of up to 4-way split screen
- ▶ Viewable under the direct sunlight at wing console
- ▶ Adjustable display background color for use in both daytime and night time

### ▶ Red LED display

- ▶ Up to 10 displays can be connected with a daisy chain cable
- ▶ Display brilliance can be collectively controlled from one dimmer controller under the daisy chain connection

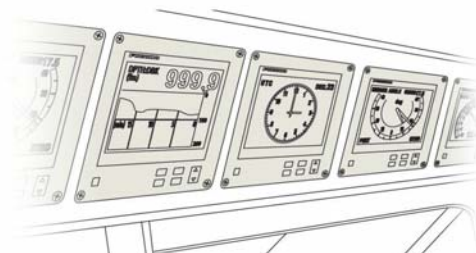


**RD-20**

### ■ Suggestion for installation

- Overhead console

- Desktop



The RD-20/50 can be mounted on the overhead console as well as on the desktop. Both units come with an optional bracket for desktop mounting. The RD-50 can also be installed overboard with the optional waterproof box.



RD-20



RD-50

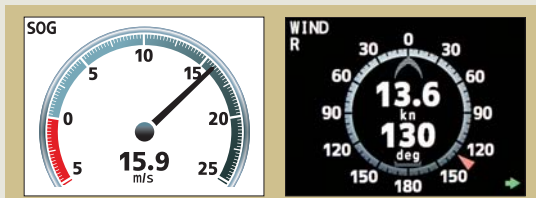
## RD-50 Data to be displayed

### Digital display



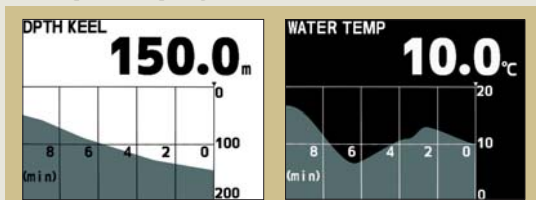
- Ship speed kn, km/h, m/s
- Heading (HDG) deg
- Course (COG) deg
- Actual / Ordered rudder angle deg
- Depth m, ft, fm
- Total distance NM, km
- Trip distance NM, km
- Water temperature °C, °F
- Rate of turn (ROT) deg/min
- Wind Direction / Speed deg
- Propeller pitch %
- Engine revolutions rpm
- Shaft revolutions rpm
- Time
- Latitude and Longitude
- Destination
- 1/2/3-axes ship speed

### Analog display



- Wind Direction / Speed deg
- Propeller pitch %
- Rate of turn (ROT) deg/min
- Ship speed kn, km/h, m/s
- Engine revolutions rpm
- Shaft revolutions rpm
- Actual / Ordered rudder angle deg
- Drift / HDG / COG deg
- Time

### Graph display



- Water temperature °C, °F
- Depth m, ft, fm

## RD-20 Data to be displayed



- Ship speed kn, km/h, m/s
- Heading (HDG) deg
- Course (COG) deg
- Actual / Ordered rudder angle deg
- Depth m, ft, fm
- Total distance NM, km
- Trip distance NM, km
- Water temperature °C, °F
- Rate of turn (ROT) deg/min
- Wind Direction / Speed deg
- Engine revolutions rpm
- Propeller pitch %
- Shaft revolutions rpm

**SPECIFICATIONS**

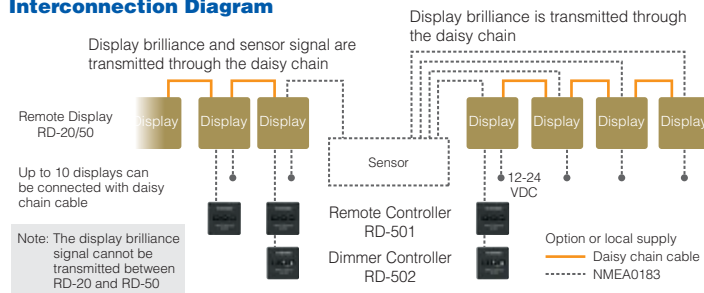


Model	RD-20	RD-50
<b>Product Name</b>	REMOTE DISPLAY	
Display	Red LED	8.4-inch color LCD
<b>Power Supply</b>		
Remote Display (RD-20/50)	DC 12-24 V	DC 12-24 V
Remote Controller (RD-501)		DC 5 V
Dimmer Controller (RD-502)		DC 5 V
<b>Environment</b>		
Temperature	-15°C~+55°C	-25°C~+55°C
Waterproofing	Display	Front: IP22 Back: IP22
	Flush mount	Front: IP56 Back: IP22
	Wall mount (with Waterproof Box)	Front: IP56 Back: IP56
	Remote Controller (RD-501)	Front: IP22 Back: IP20
Dimmer Controller (RD-502)	Front: IP22 Back: IP20	
Vibration	IEC 60945-4	

**Equipment List**

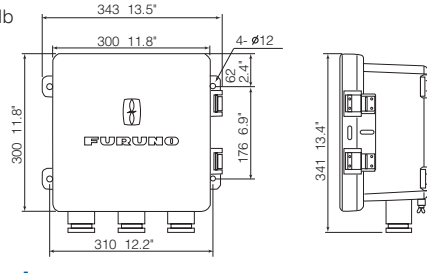
Standard	
Remote Display	RD-20/50
Installation Materials	
Option	
Remote Controller	RD-501
Dimmer Controller	RD-502
Waterproof Box (for RD-50)	DS-605
Bracket for desktop mounting	

**Interconnection Diagram**



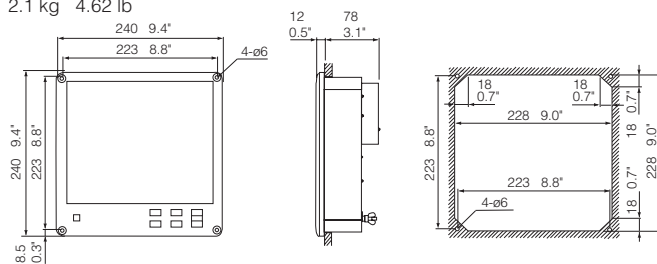
**Waterproof Box (for RD-50) DS-605**

9.6 kg 21.2 lb



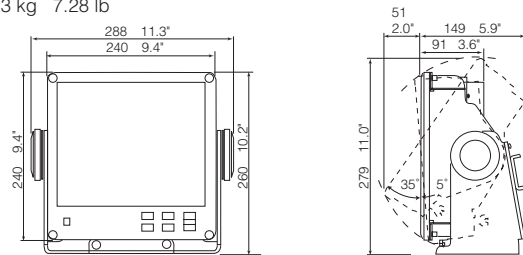
**Remote Display (Flush mount) RD-50**

2.1 kg 4.62 lb



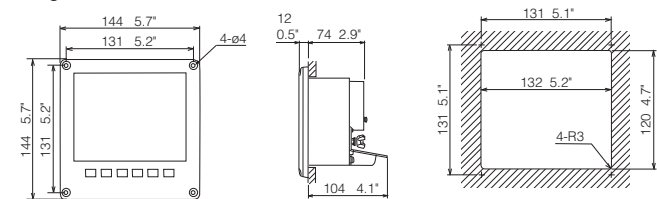
**Remote Display (with an optional bracket) RD-50**

3.3 kg 7.28 lb



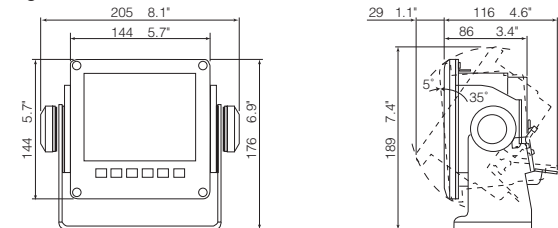
**Remote Display (Flush mount) RD-20**

0.8 kg 1.76 lb



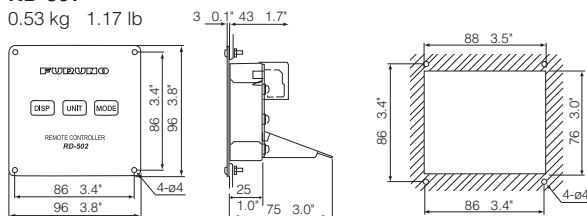
**Remote Display (with an optional bracket) RD-20**

1.3 kg 2.87 lb



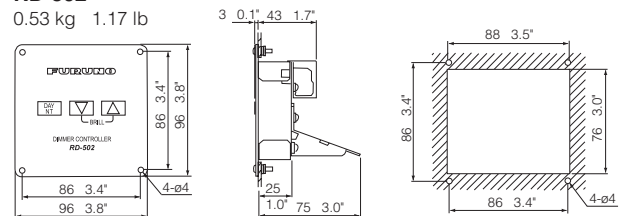
**Remote Controller RD-501**

0.53 kg 1.17 lb



**Dimmer Controller RD-502**

0.53 kg 1.17 lb



All brand and product names are registered trademarks, trademarks or service marks of their respective holders.

SPECIFICATIONS SUBJECT TO CHANGE WITHOUT NOTICE

**FURUNO ELECTRIC CO., LTD.** Nishinomiya, Hyogo, Japan  
www.furuno.com

**FURUNO U.S.A., INC.** Camas, Washington, U.S.A.  
www.furuno.usa.com

**FURUNO (UK) LIMITED** Havant, Hampshire, U.K.  
www.furuno.co.uk

**FURUNO NORGE A/S** Ålesund, Norway  
www.furuno.no

**FURUNO DANMARK A/S** Hvidovre, Denmark  
www.furuno.dk

**FURUNO SVERIGE AB** Västra Frölunda, Sweden  
www.furuno.se

**FURUNO FINLAND OY** Espoo, Finland  
www.furuno.fi

**FURUNO POLSKA Sp. z o.o.** Gdynia, Poland  
www.furuno.pl

**FURUNO DEUTSCHLAND GmbH** Rellingen, Germany  
www.furuno.de

**FURUNO FRANCE S.A.S.** Bordeaux-Mérignac, France  
www.furuno.fr

**FURUNO ESPAÑA S.A.** Madrid, Spain  
www.furuno.es

**FURUNO ITALIA S.r.l.** Genoa, Italy

**FURUNO HELLAS S.A.** Glyfada, Greece  
www.furuno.gr

**FURUNO (CYPRUS) LTD** Limassol, Cyprus  
www.furuno.com.cy

**FURUNO EURUS LLC** St. Petersburg, Russian Federation  
www.furuno.com.ru

**FURUNO SHANGHAI CO., LTD.** Shanghai, China  
www.furuno.com.cn

**FURUNO KOREA CO., LTD.** Busan, Korea  
**RICO (PTE) LTD** Singapore  
www.rico.com.sg